



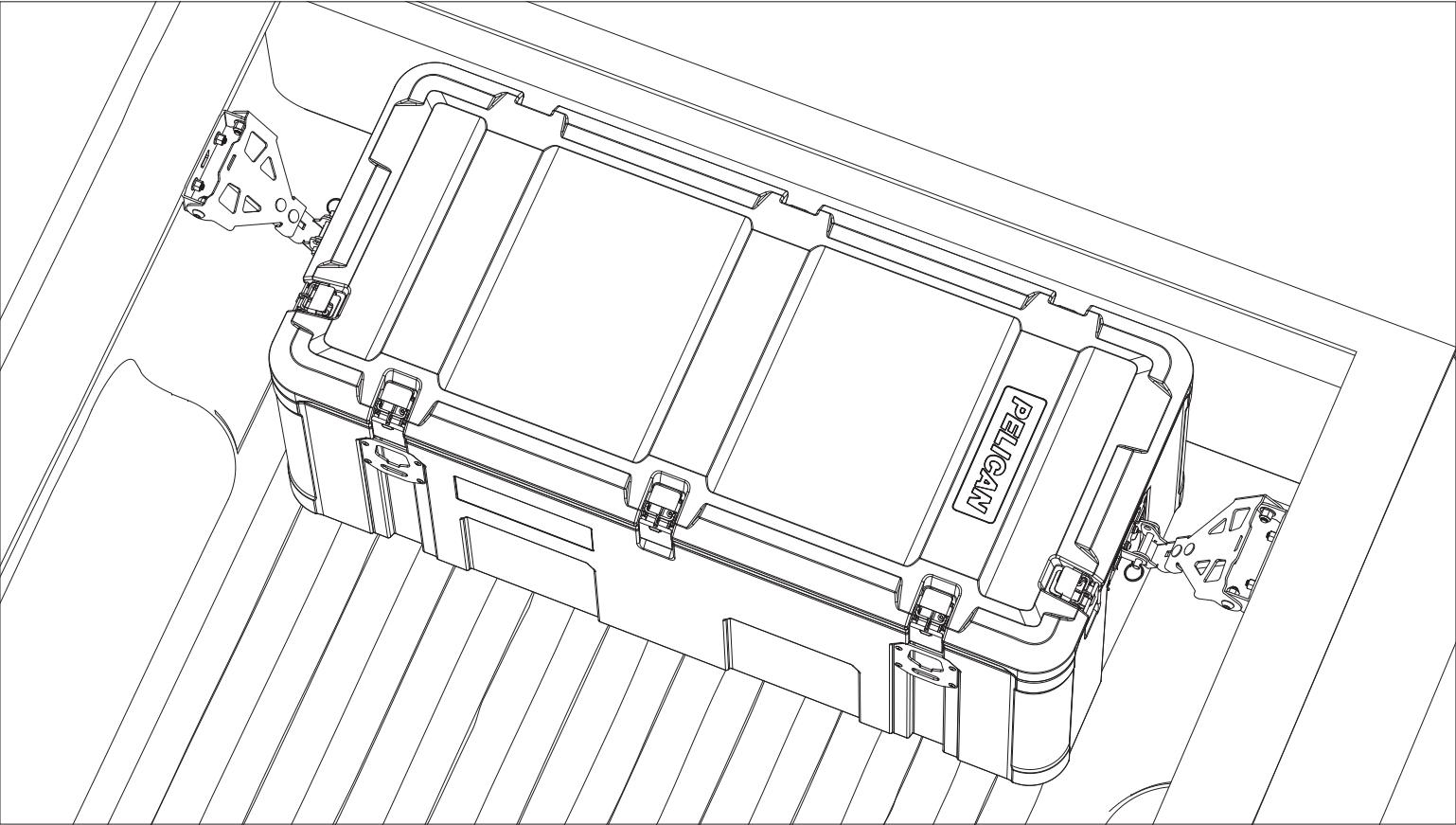
PELICAN™ CARGO CASE
CARGO CASE CROSSBED MOUNT, GEN 2

XBEDMT2

SINCE 1976



For Pelican™ BX135, BX255 Cargo Cases in Truck Beds using factory bed-flange mounting or Toyota™ Deck Rails.



PELICAN™ CARGO CASES AND MOUNTS
LIMITED LIFETIME WARRANTY (CASES) AND THREE YEAR WARRANTY (MOUNTS)

Pelican Products, Inc. ("Pelican") guarantees its Pelican™ Cargo cases for a lifetime against breakage or defects in workmanship. This lifetime warranty does not cover mounting hardware, which Pelican warrants against defects in materials and workmanship for three years from the date of purchase. To the extent permitted by law, Pelican's liability is limited to the case and not its contents and in no event shall Pelican's liability to the purchaser for damages exceed the purchase price of the case in respect of which damages are claimed.

TO THE EXTENT PERMITTED BY LAW: (A) THIS WARRANTY IS IN LIEU OF ALL WARRANTIES, EXPRESS OR IMPLIED, INCLUDING, BUT NOT LIMITED TO, THE IMPLIED WARRANTIES OF MERCHANTABILITY AND FITNESS FOR A PARTICULAR PURPOSE; (B) ALL OTHER IMPLIED WARRANTIES AND ANY LIABILITY NOT BASED UPON CONTRACT ARE HEREBY DISCLAIMED AND EXCLUDED; AND (C) IN NO EVENT SHALL PELICAN BE LIABLE FOR ANY INDIRECT, PUNITIVE, INCIDENTAL OR CONSEQUENTIAL DAMAGES, OR SPECIAL DAMAGES, REGARDLESS OF WHETHER A CLAIM FOR SUCH DAMAGES IS BASED ON WARRANTY, CONTRACT, NEGLIGENCE OR OTHERWISE .

With valid dated proof of purchase, Pelican will either repair or replace any broken or defective product, at our sole option. Certain products are available for a limited time only. If a claim is made involving one of these products, Pelican reserves the right to replace a broken or defective product with a standard Pelican product of comparable size and quality if no comparable limited edition product is available at the time of a claim. TO THE EXTENT PERMITTED BY LAW, THIS SHALL BE THE SOLE AND EXCLUSIVE REMEDY OF THE PURCHASER.

To make a warranty claim, the purchaser must complete the warranty claim form at <https://www.pelican.com/us/en/support/warranty/>. Any warranty claims shall be made by the purchaser as soon as practicable and, with respect to the mounts and related hardware, no later than three years from the date of purchase. The purchaser must provide valid dated proof of purchase and obtain a return authorization number from Pelican Customer Service prior to returning any product, and is responsible for paying for all warranty freight costs. If Pelican determines that any returned product is not defective, within the terms of this warranty, the purchaser shall pay Pelican all costs of handling, return freight and repairs at Pelican's prevailing rates.

This warranty does not cover normal wear and tear including but not limited to scratches, dents or tears, aesthetic surface damage which may be caused by oxidation or by the natural breakdown of colors caused by exposure to the elements. All warranty claims of any nature are barred if the product has been altered, damaged or in any way physically changed, or subjected to abuse, misuse, negligence or accident.

Some states and countries do not allow limitations on how long an implied warranty lasts or the exclusion or limitation of incidental or consequential damages, so the above limitation or exclusion may not apply to you. This warranty gives you specific legal rights, and you may have other rights which vary from state to state and country to country.

In Australia: The benefits provided to you under this warranty are in addition to your rights and remedies as a consumer under the Australian Consumer Law as contained in the Competition and Consumer Act 2010 (Cth) ("the Act"). Nothing in this warranty limits the rights or obligations of a party under the Act in relation to the supply to consumers of goods which cannot be limited, modified or excluded. If applicable, our goods come with guarantees that cannot be excluded under the Act. Consumers are entitled to a replacement or refund for a major failure and compensation for any other reasonably foreseeable loss or damage. Consumers are also entitled to have the goods repaired or replaced if the goods fail to be of acceptable quality and the failure does not amount to a major failure. If you are not a consumer under the Act, then your rights may be limited. To make a warranty claim, the purchaser may contact Pelican Products Australia, Suite 2.33, West Wing, Platinum Bldg., Erina NSW 2250, Tel: +612 4367 7022, or email: info.australia@pelican.com. Any claims should be made as soon as practicable. To expedite claims, the purchaser should obtain a return authorization number from Pelican Customer Service prior to returning any product. The purchaser is responsible for paying for all freight costs. If Pelican determines that any returned product is not defective, within the terms of this warranty or the Act, the purchaser may pay Pelican all costs of handling, return freight and repairs at Pelican's prevailing rates. In the event that Pelican determines that any returned product is defective, within the terms of this warranty or the Act, Pelican shall pay the purchaser all reasonable costs of the purchaser in making a claim under this warranty.



READ ME!

THANK YOU FOR PURCHASING A PELICAN™ CARGO CASE GEN2 CROSS BED MOUNT KIT. BEFORE YOU START, TAKE A MOMENT TO FAMILIARIZE YOURSELF WITH THE FITTING INSTRUCTIONS AND THE COMPONENTS RECEIVED. REFER TO PAGE 1 FOR A LIST OF ALL THE COMPONENTS, QUANTITIES AND TOOLS REQUIRED.



IMPORTANT WARNING!

It is critical that Pelican™ Cargo Mounts and Cases be properly installed and securely attached to your vehicle. Failure to properly secure the Mounts and Cargo Case to your vehicle could result in serious injury and even death. You are responsible for the fitment of the Mounts and Cargo Cases to your vehicle. You must therefore periodically inspect the equipment for wear and damage. Replace if in doubt. If you have limited mechanical experience you should not attempt to install the equipment. You should have the equipment installed by a professional installer if you have any doubts about your abilities.

It is imperative that the user check the fit security of the cases to the vehicle after an initial brief period of driving and adjust if required. Pelican recommends the user do so periodically and if road conditions change (i.e. freeway to dirt "road"), again check the fit security of the attachment of the Case to the vehicle.



LATCHES AND MOUNTING KIT CARE

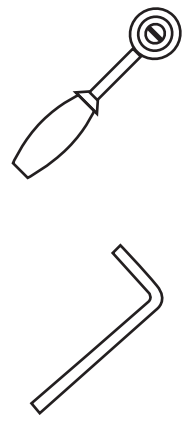
Periodically check the latches and mounting hardware to ensure there are no loose parts. Continual exposure to daylight may cause the black hardware finish to dull. To maintain the glossy finish, occasionally apply a light coat of UV protectant. After exposure to salty coastal climates or snowy regions, rinse off the mounts with water to remove salt deposits. To help prevent corrosion, apply a non-reactive silicone-based oil or spray to nuts and bolts. Take care not to damage painted surfaces during mounting and dismounting. Touch-up paint is recommended as needed to prevent corrosion.

1

GET ORGANIZED

PARTS LIST		
ITEM NO.	DESCRIPTION	QTY.
1	CROSS-BED MOUNT, BRACKET	2
2	CROSS-BED MOUNT, UPPER	2
3	M10 X 25 BTN-HD HEX DRV SCREW	4
4	M10 NYLON LOCK FLANGE NUT	4
5	CARGO CASE PLATE CLAMP	2
6	M8 NYLON LOCK NUT	8
7	M8 X 16 CARRIAGE BOLT	4
8	M8 X 30 CARRIAGE BOLT	4
9	CROSS-BED MOUNT, LOWER	2
10	M6 NYLON RETAINER WASHER	4
11	M10 NYLON FLAT WASHER, BLACK	4
12	FLANGE CLAMP	2
13	QUICK-RELEASE PIN	2
14	M6 FLAT WASHER	4
15	M6 SPLIT LOCK WASHER	4
16	M6 X 14 BTN HD HEX DRV SCREW	4
17	RAIL NUT, TOYOTA	4
18	LANYARD	2

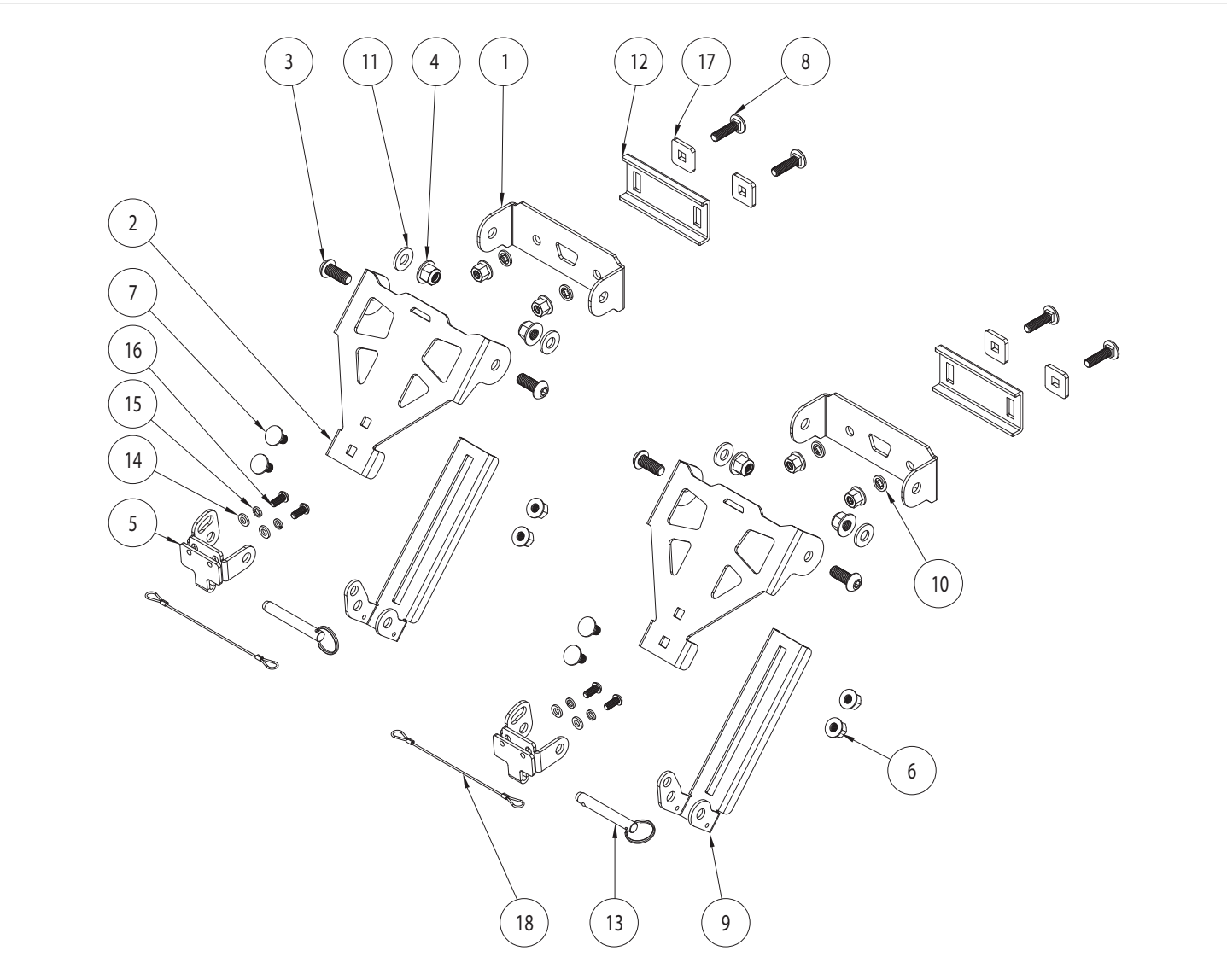
TOOLS REQUIRED*



M10, M13, M15
WRENCH / SOCKET

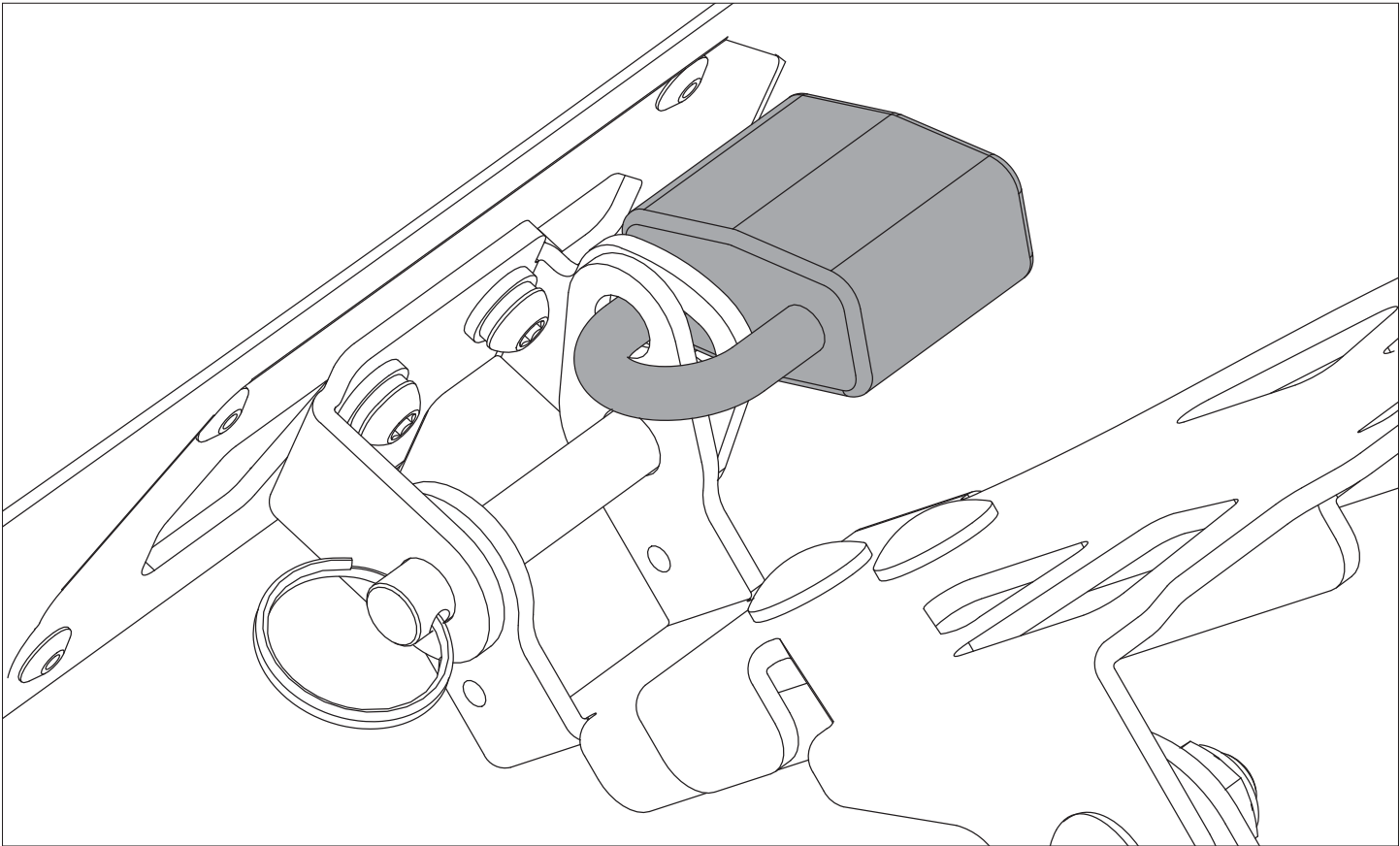
M4, M6
ALLEN KEY / DRIVER

* Tools not included.



9

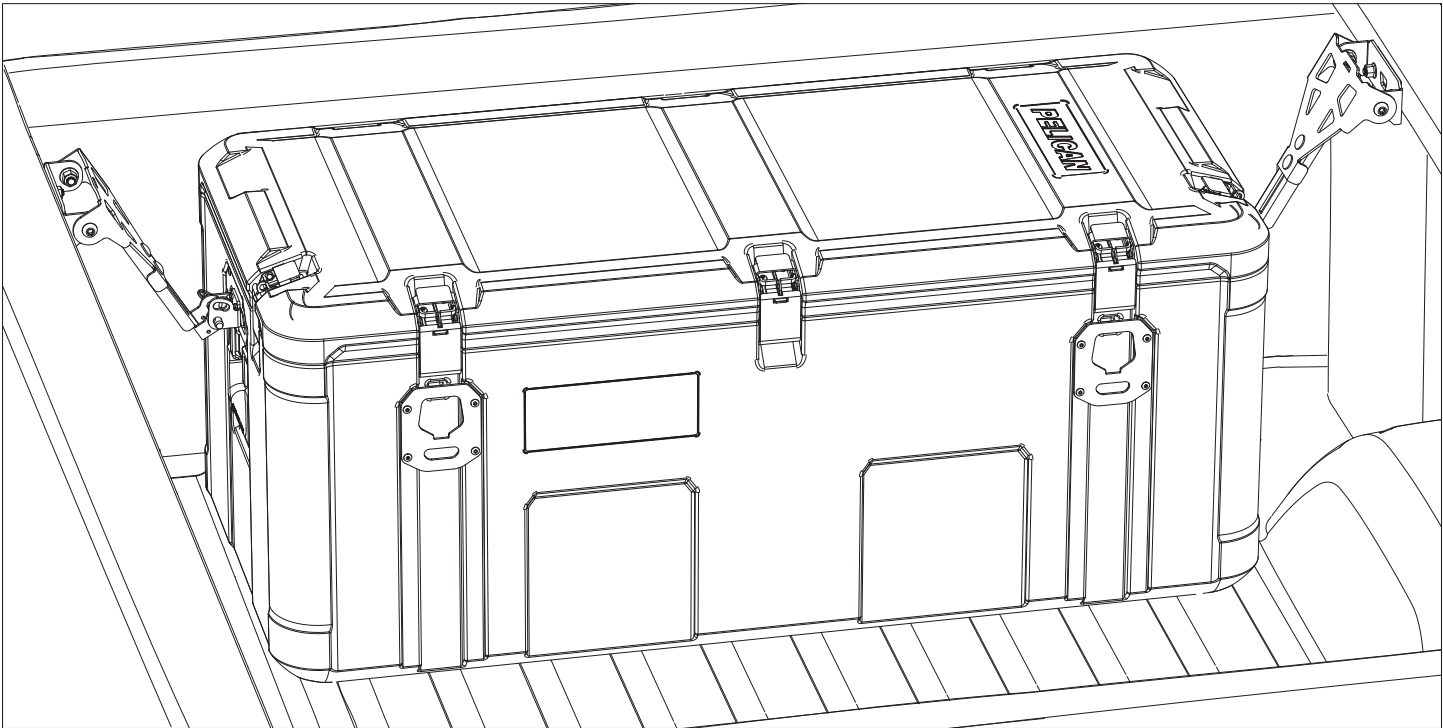
TO SECURE CARGO CASE AGAINST THEFT



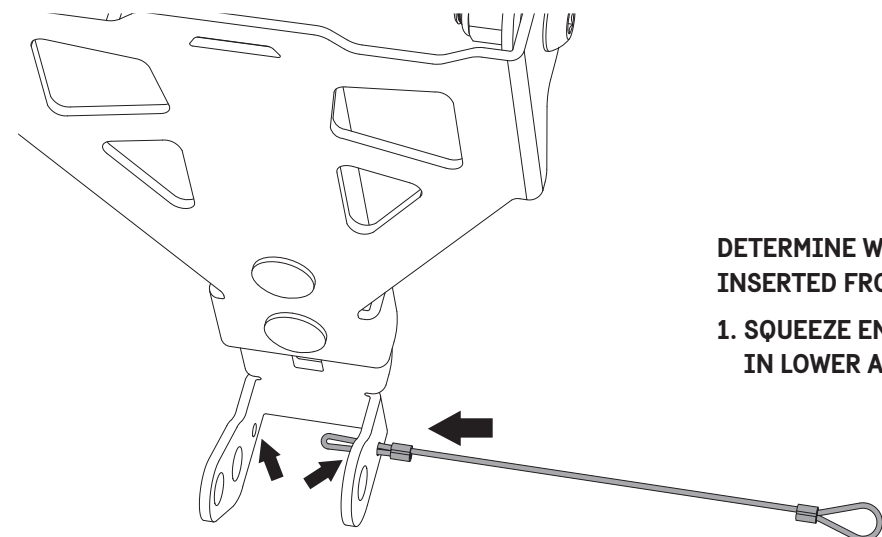
PADLOCK ONE OR BOTH MOUNTS (LOCK SOLD SEPARATELY).

10

COMPLETED INSTALLATION

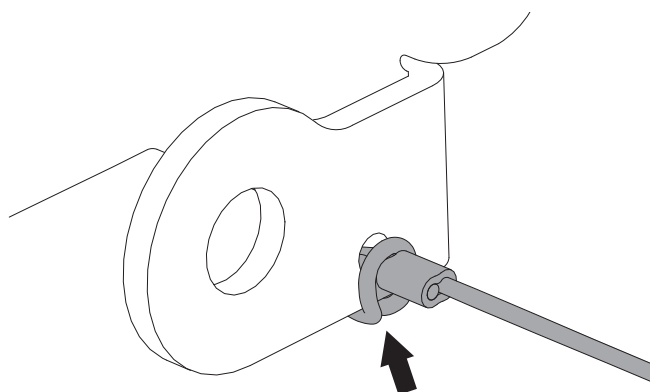


ASSEMBLE LANYARDS TO LOWER SADDLE ARMS

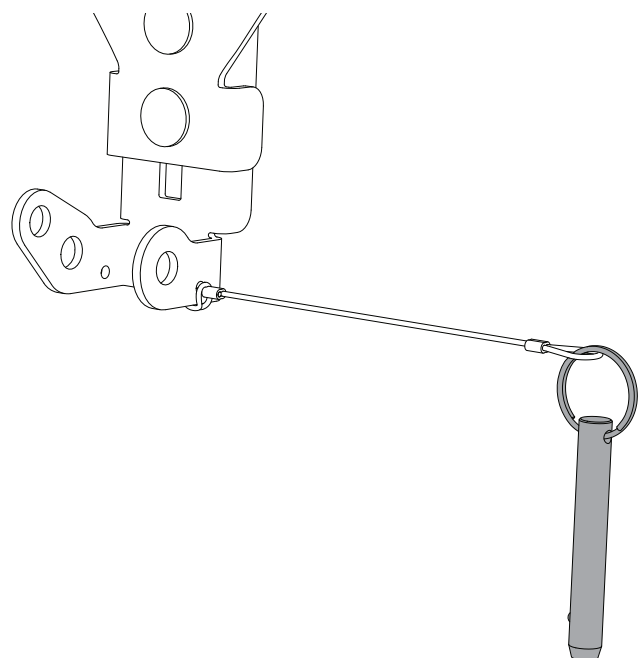


DETERMINE WHICH SIDE THE QUICK RELEASE PIN WILL BE INSERTED FROM (MAY VARY LEFT TO RIGHT ON TRUCK).

1. SQUEEZE END OF LANYARD AND PUSH THROUGH SMALL HOLE IN LOWER ARM ON THAT SIDE.



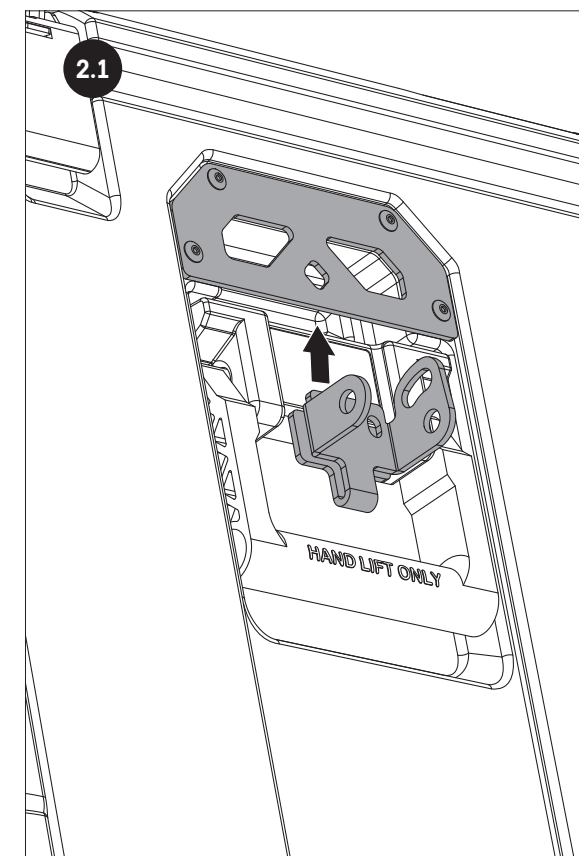
2. FEED OTHER END BACK THROUGH LOOP. PUSH PAST CRIMP EDGE TO SECURE, AS SHOWN.



3. ATTACH LOOSE END TO KEY-RING ON QUICK RELEASE PIN. REPEAT FOR OTHER MOUNT.

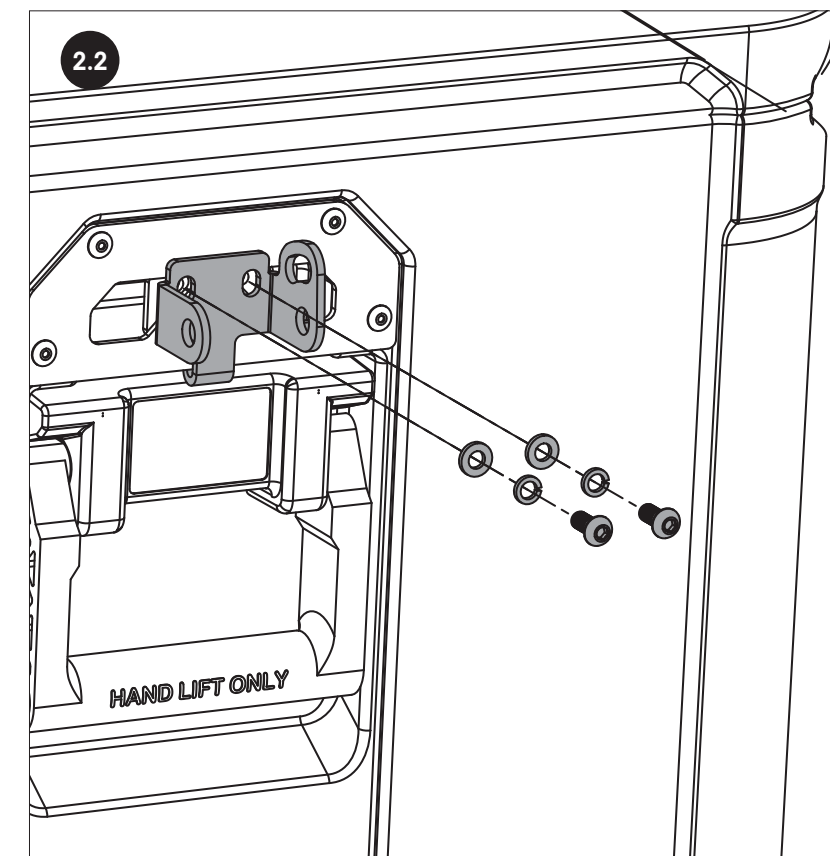
INSTALL CASE PLATE CLAMPS

SLIDE PLATE CLAMP UPWARDS WITH U-BEND ENCLOSING CASE PLATE.



CENTER CLAMP LEFT TO RIGHT TO ALIGN SCREW HOLES WITH PLATE SLOTS.

FIT TWO (M6 X 14) SCREWS THROUGH SLOTS INTO THREADED HOLES IN CLAMP.

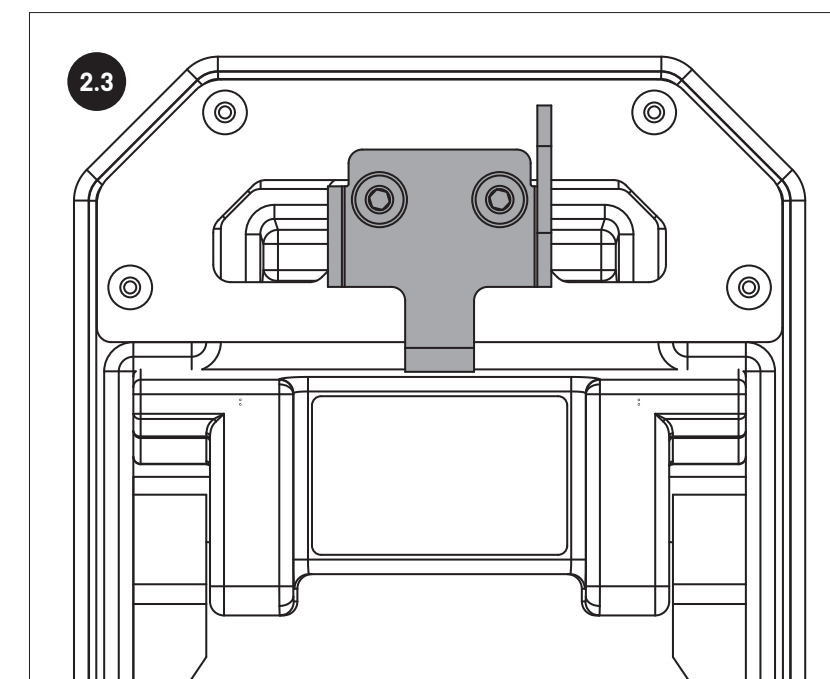


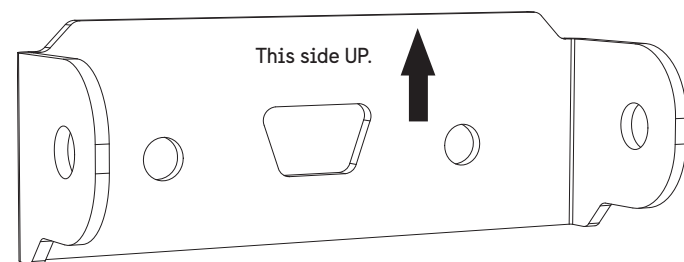
KEEP CLAMP VERTICAL AS SHOWN WHILE TIGHTENING SCREWS WITH M4 ALLEN TOOL TO SECURE FIRMLY IN PLACE.

CLAMP SHOULD BE SECURE AGAINST SLIDING OR ROTATION, WITH MOUNTING EARS VERTICAL.

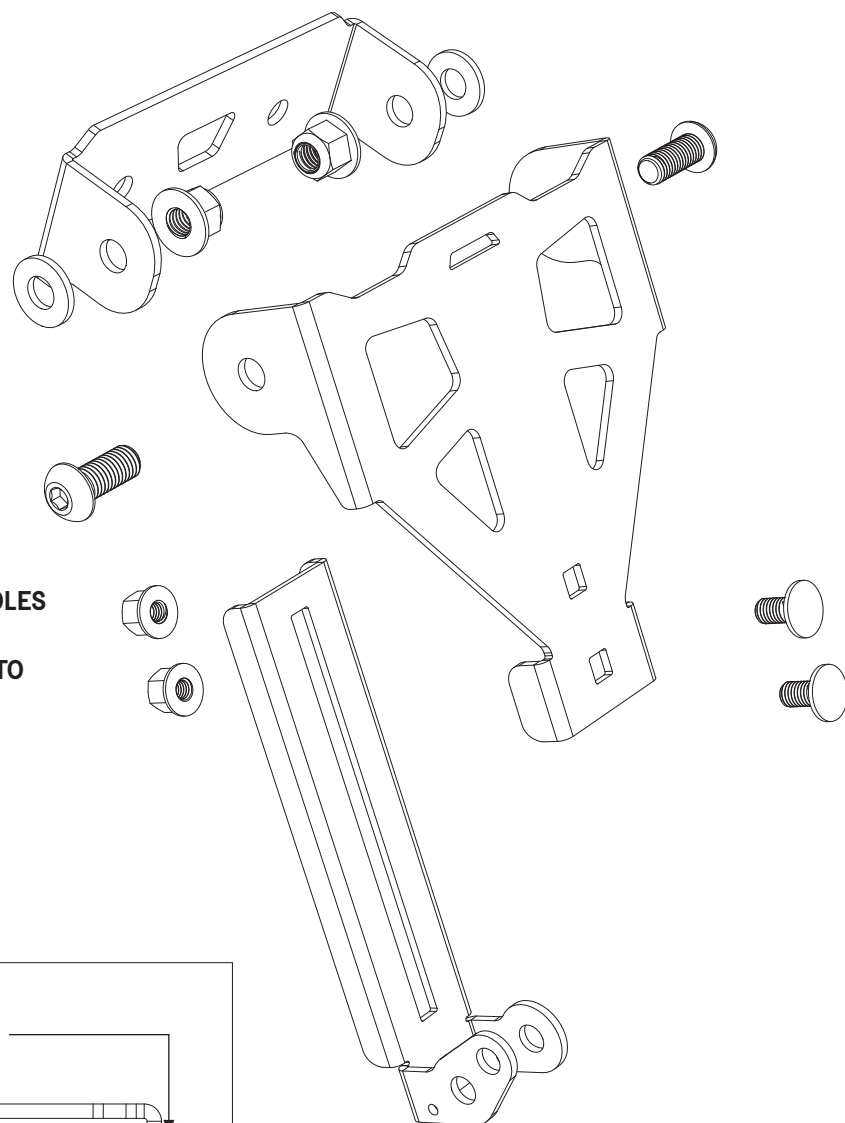
CHECK THAT TOP EDGE OF CLAMP IS PARALLEL WITH EDGE OF CASE PLATE.

REPEAT CASE PLATE CLAMP INSTALLATION ON OPPOSITE END OF CASE.



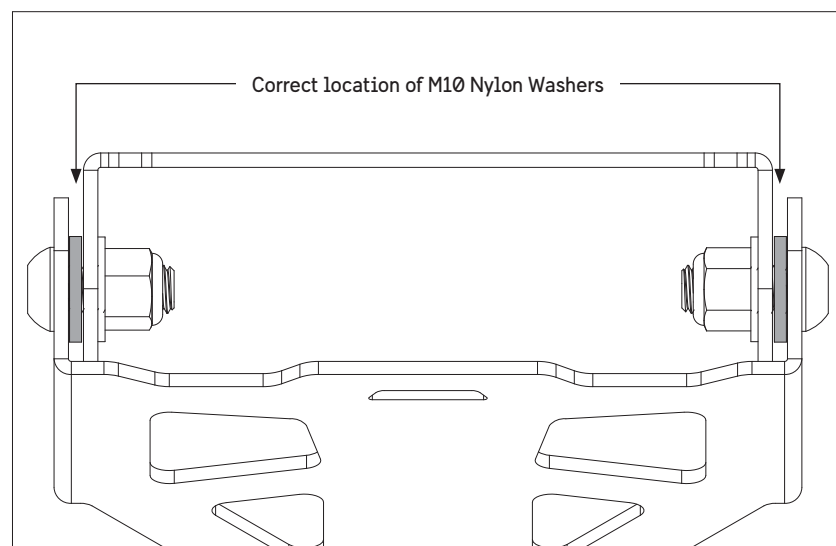


PLACE EARS OF BRACKET INSIDE UPPER MOUNT EARS AS SHOWN BELOW.
FIT (M10) NYLON FLAT WASHERS BETWEEN THEM WITH (M10 X 25) BUTTON HEAD BOLTS.



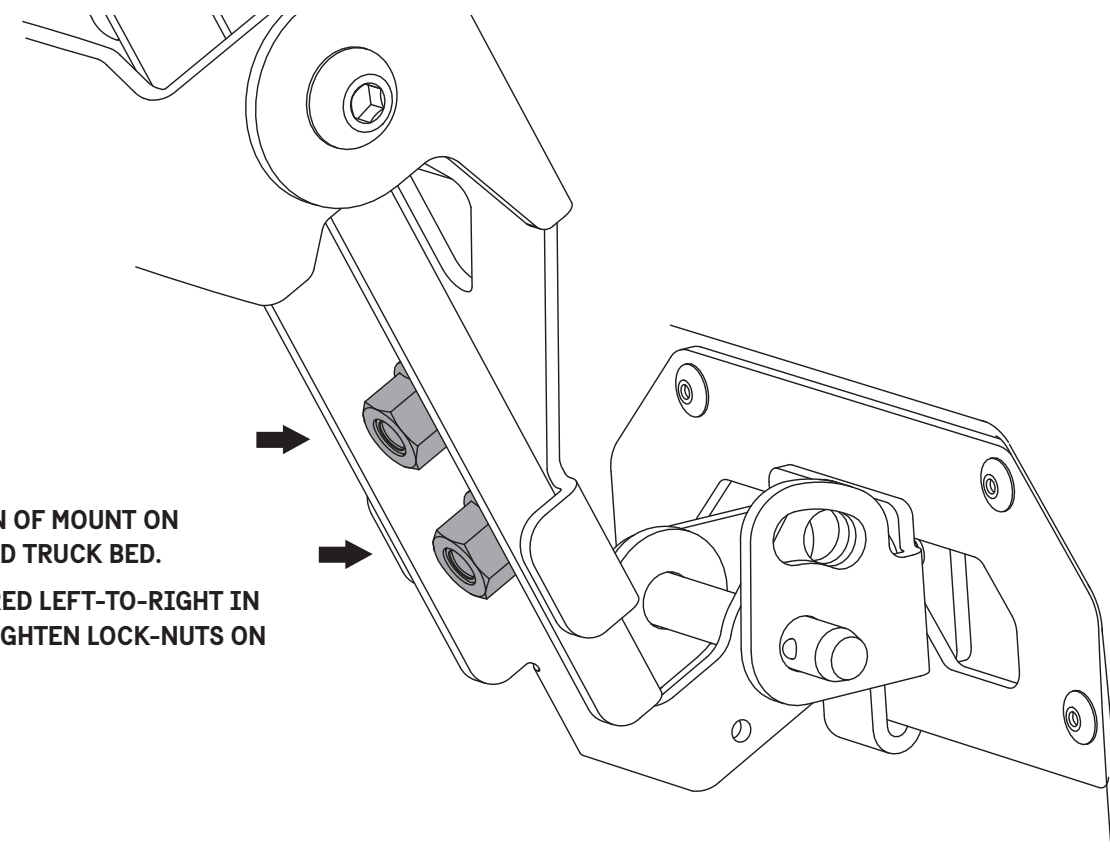
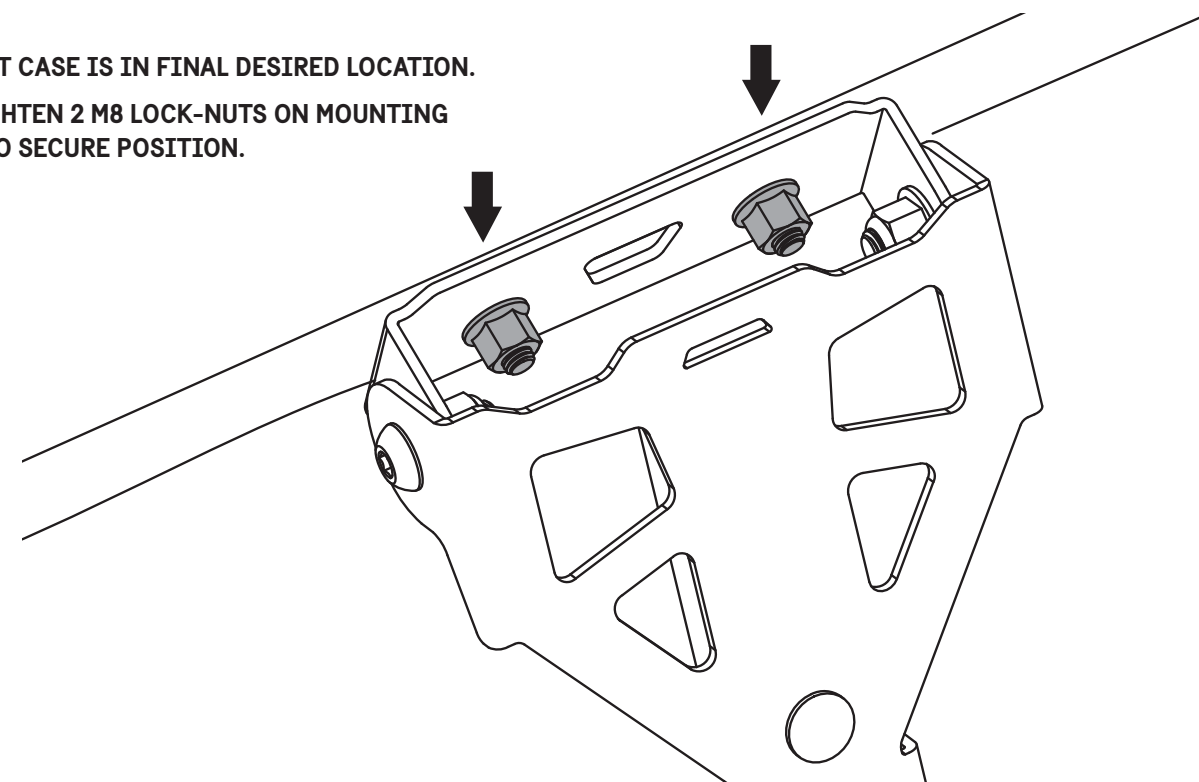
FIT TWO (M8 X 16) CARRIAGE BOLTS IN SQUARE HOLES FROM FRONT OF UPPER MOUNT THROUGH SLOT IN LOWER MOUNT. FASTEN (M8) LOCK NUTS LOOSELY TO ALLOW ADJUSTMENT LATER.

REPEAT FOR SECOND ASSEMBLY.



FASTEN (M10) LOCK-NUTS SNUGLY BUT ALLOWING ROTATION OF MOUNT.
MOUNTS WILL SWING OUT OF WAY WHEN INSTALLING/REMOVING CASE.

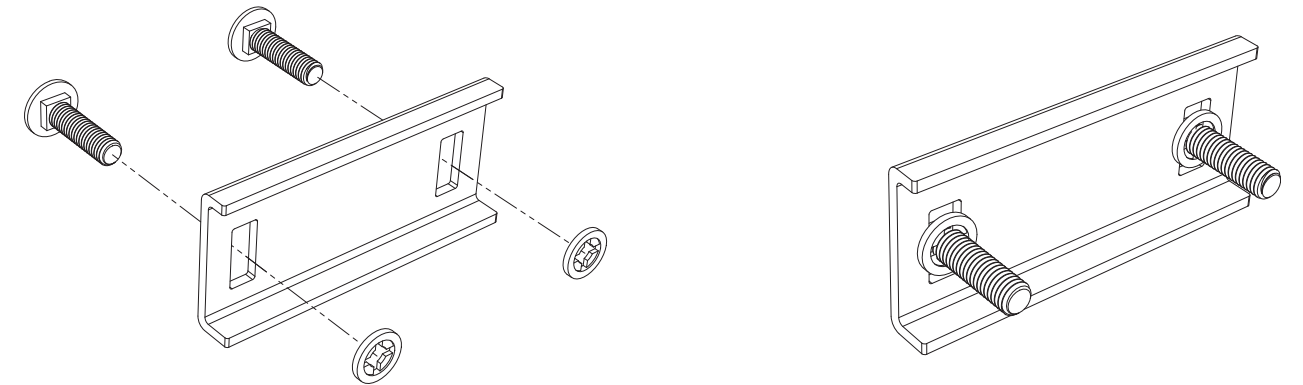
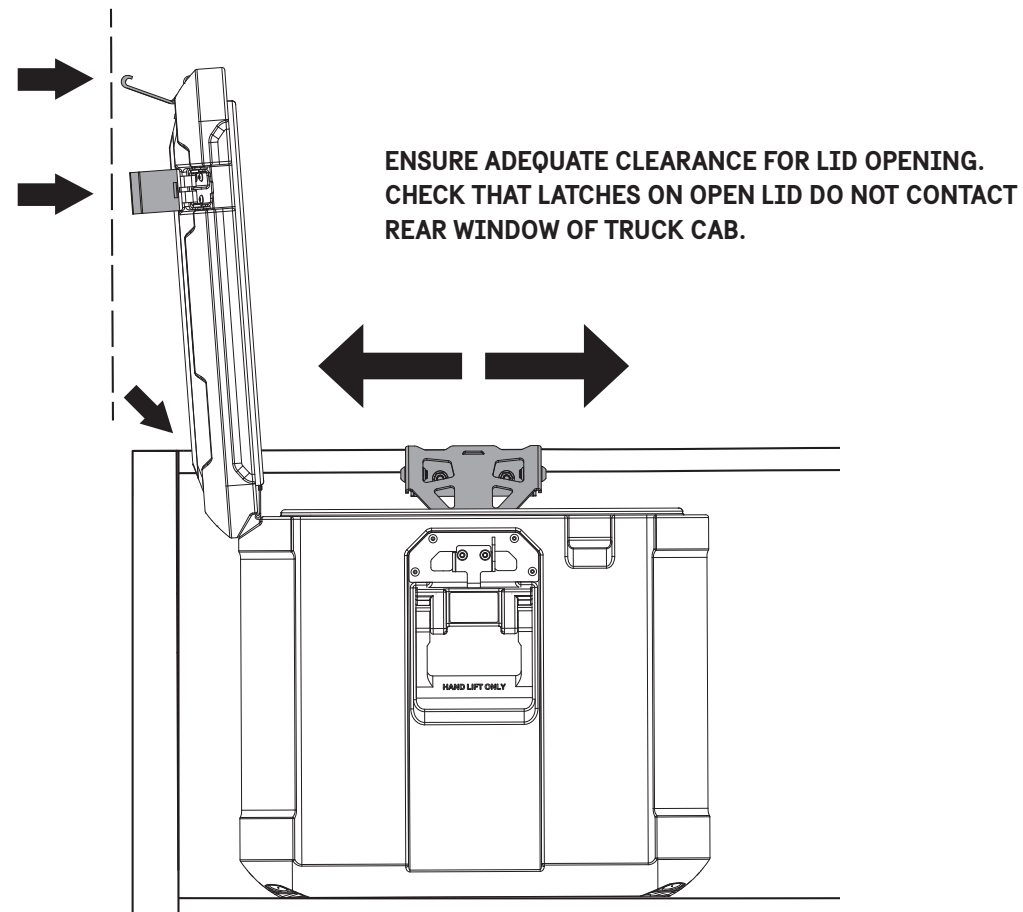
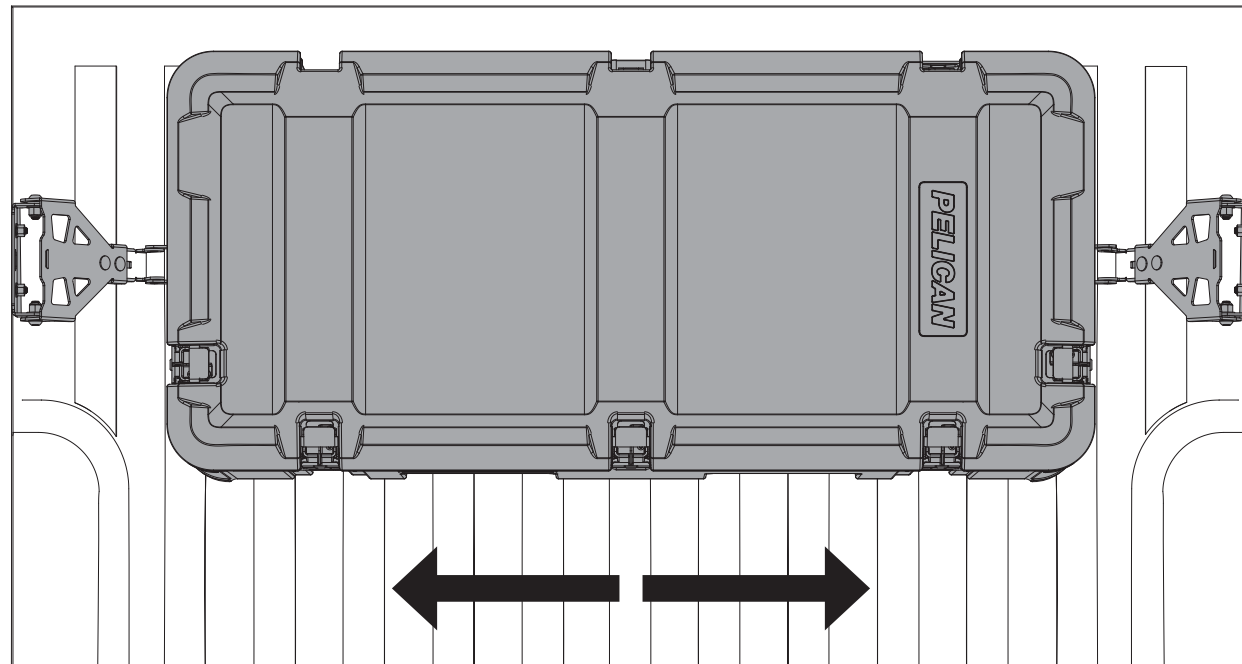
CHECK THAT CASE IS IN FINAL DESIRED LOCATION.
FIRMLY TIGHTEN 2 M8 LOCK-NUTS ON MOUNTING BRACKET TO SECURE POSITION.



REPEAT WITH INSTALLATION OF MOUNT ON OPPOSITE SIDE OF CASE AND TRUCK BED.
MAKE SURE CASE IS CENTERED LEFT-TO-RIGHT IN TRUCK BED, THEN FIRMLY TIGHTEN LOCK-NUTS ON BOTH LOWER MOUNTS.

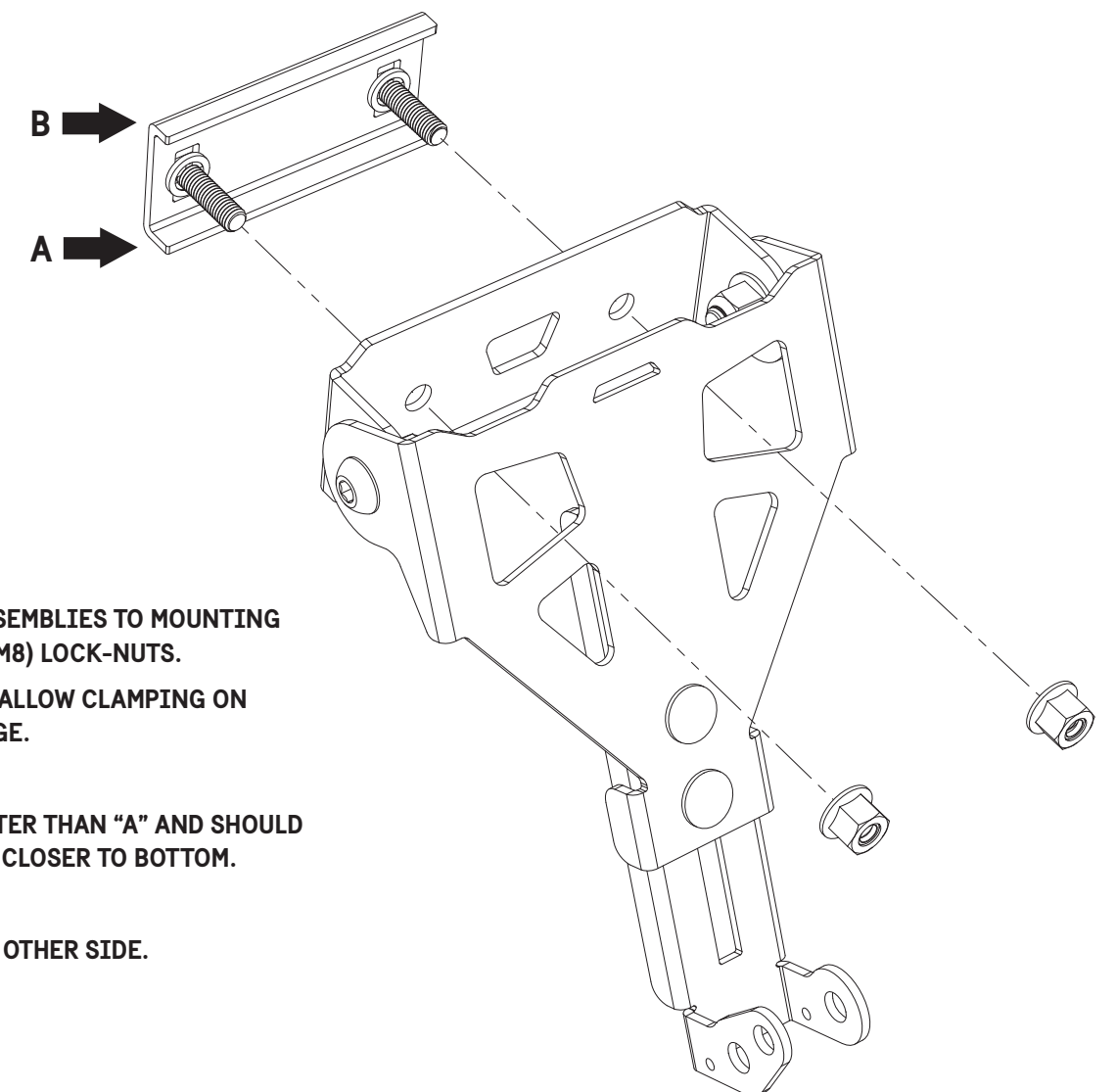
POSITION CASE IN TRUCK BED TO DETERMINE LOCATION OF MOUNTING BRACKETS.

IMPORTANT: CASE MUST BE CENTERED LEFT TO RIGHT TO PROPERLY SECURE CASE WITH CROSS-BED MOUNTING SYSTEM.



ASSEMBLE TWO (M8 X 30) CARRIAGE BOLTS THROUGH
SLOTS IN FLANGE CLAMPS TO NYLON RETAINER WASHERS.

SLIDE NYLON RETAINER WASHERS AGAINST
FLANGE CLAMP TO TIGHTLY SEAT SQUARE
BOLT FEATURES IN SLOTS AS SHOWN.



FIT FLANGE CLAMP ASSEMBLIES TO MOUNTING
BRACKET WITH FOUR (M8) LOCK-NUTS.

LEAVE NUTS LOOSE TO ALLOW CLAMPING ON
TRUCK BED RAIL FLANGE.

*NOTE LEG "B" IS SHORTER THAN "A" AND SHOULD
BE AT TOP WITH SLOTS CLOSER TO BOTTOM.

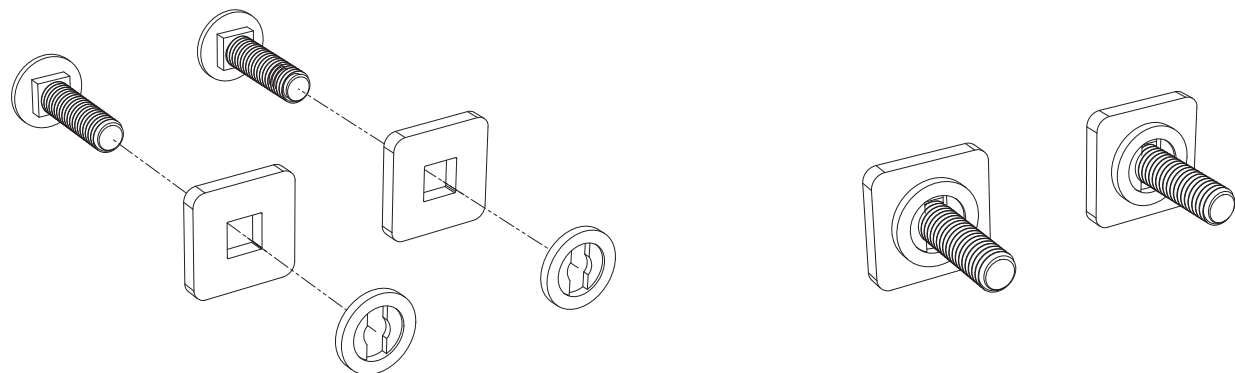
REPEAT ASSEMBLY FOR OTHER SIDE.

4

ASSEMBLE BED RAIL HARDWARE TO A-ARMS

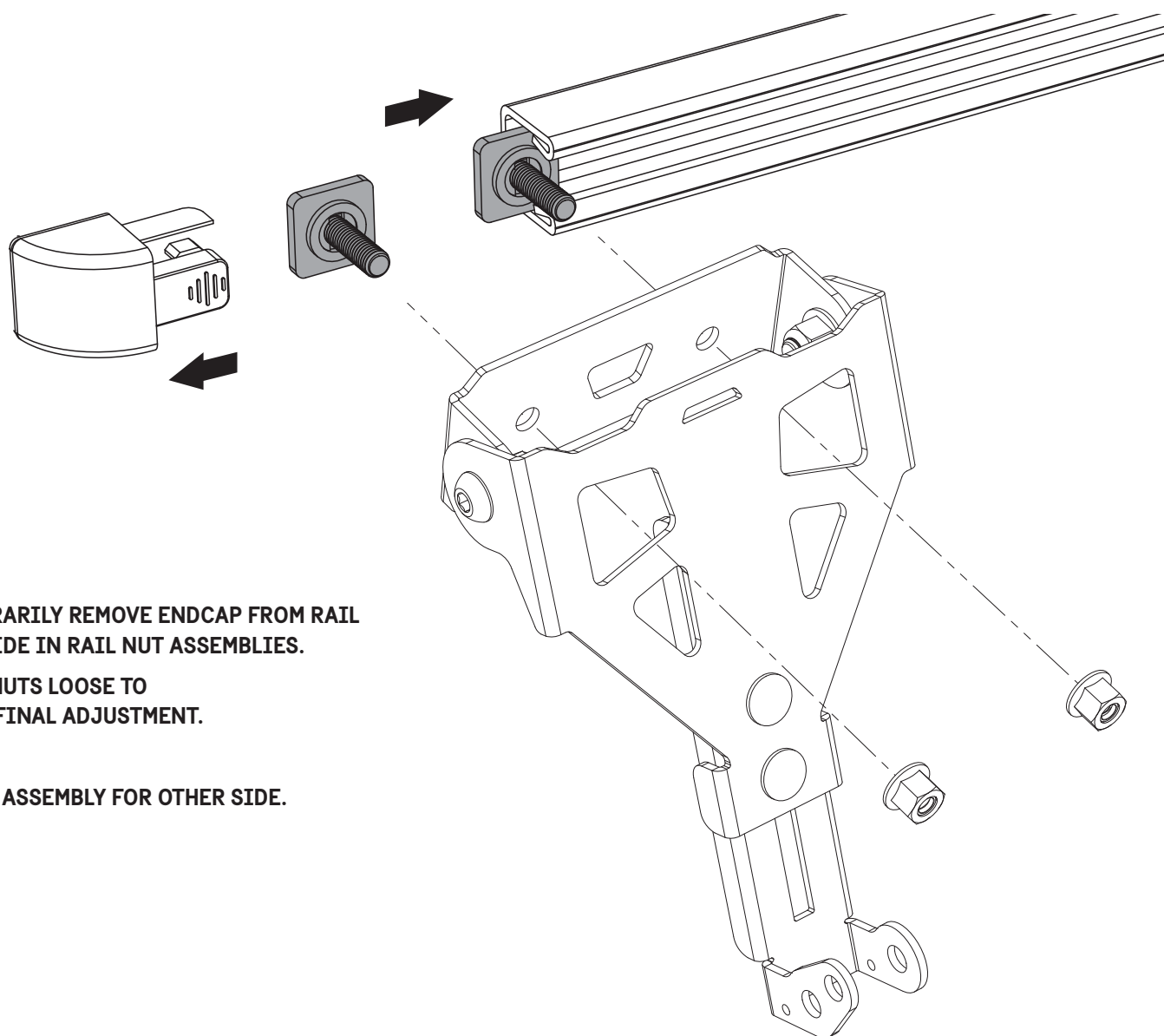
4B

FOR TOYOTA DECK RAIL MOUNTING



ASSEMBLE TWO (M8 X 30) CARRIAGE BOLTS THROUGH RAIL NUTS AND NYLON RETAINER WASHERS.

SLIDE NYLON RETAINER WASHERS FIRMLY AGAINST RAIL NUTS AND TIGHTLY SEAT SQUARE BOLT FEATURES AS SHOWN.



TEMPORARILY REMOVE ENDCAP FROM RAIL AND SLIDE IN RAIL NUT ASSEMBLIES.

LEAVE NUTS LOOSE TO ALLOW FINAL ADJUSTMENT.

REPEAT ASSEMBLY FOR OTHER SIDE.

5

MOUNT CROSS-BED SUBASSEMBLY TO TRUCK BED RAIL



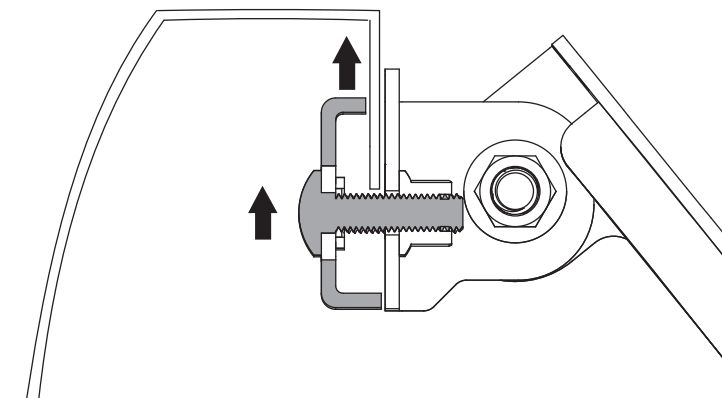
5A

FOR UNIVERSAL BED RAIL FLANGE MOUNTING

SLIDE FLANGE CLAMP AND CARRIAGE BOLT UP AS HIGH AS POSSIBLE ON RAIL FLANGE.

MAY REQUIRE REPOSITIONING ALONG RAIL TO CLEAR RIBS OR FASTENERS.

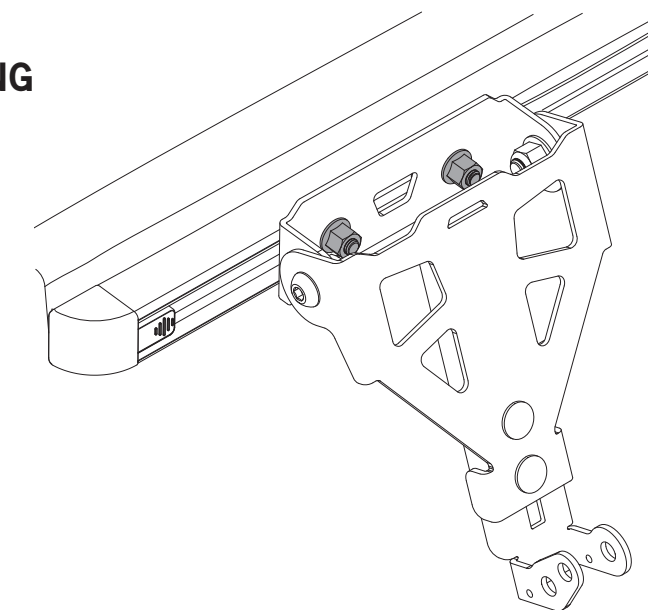
PARTIALLY TIGHTEN M8 LOCKNUTS TO ALLOW FINAL ADJUSTMENT.



5B

FOR TOYOTA DECK RAIL MOUNTING

PARTIALLY TIGHTEN M8 LOCKNUTS TO ALLOW FINAL ADJUSTMENT.



SWING MOUNT UPWARDS INSIDE CASE PLATE CLAMP.

ADJUST LOWER MOUNT LENGTH TO INSERT QUICK RELEASE PIN THROUGH BOTH.

